

Registration Form

Please check the appropriate box:

- Evaluation & Assessment** Members: \$110 Non-Members: \$130
 Effective Strategies Members: \$110 Non-Members: \$130

Order both programs and receive a \$25 discount!

TOTAL _____

Payment Options:

- Check enclosed payable to: Credit Card
Illinois Mental Health Counselors (Master Card, VISA, AMEX, Discover)

Name _____

Address _____

City, State, Zip _____

Phone Number () _____

Email Address _____

License # _____

Credit Card # _____

Expiration Date _____ V-Code _____

Signature _____

Registration Options:

Online: www.IMHCA.org/calendar By Mail: P.O. Box 706
Click on Supervision Workshops DeKalb, IL 60115

By Phone: (815) 787-0515 By Fax: (815) 787-0505

Continuing Education Hours: Each program is recognized as providing 6.0 CE Hours for: LPC/LCPC and LSW/LCSW (IDFPR license # 159-000650) LMFT (IDFPR license # 168-000148) and Lic Psychologist (IDFPR license # 268-000009) and by the NBCC-Approved Continuing Education Provider (ACEP) and may offer NBCC-Approved Clock Hours for events that meet NBCC requirements. The ACAP solely is responsible for all aspects of the program. (Provider No. 6274). IL State Board of Education Provider Code: 16019027P000000, 6 PDs

Proof of IMHCA Membership: To receive the member discount you need to be a current member of ICA and the IMHCA division. If you are unsure, please call and we can verify your membership status.

No Refunds.

Questions: Call (815) 787-0515; e-mail myimhca@gmail.com; or visit our website at www.imhca.org

FOLLOW US



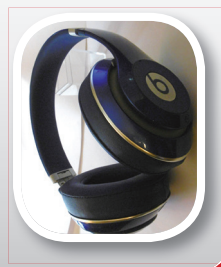
www.IMHCA.org

Non-Profit Organization
U.S. Postage Paid
Illinois Mental Health
Counselors Association

Illinois
Mental Health
Counselors

P.O. Box 706 • DeKalb, IL 60115

Supervision
Home Study
PROGRAMS



Supervision Home Study PROGRAMS



Illinois Mental Health Counselors is the three-time recipient of the American Mental Health Counselors Association annual award for Outstanding State Chapter Service to Members.

Evaluation & Assessment

*in Counseling Supervision
6.0 CEs*

Effective Strategies

*in Counseling Supervision
6.0 CEs*

Illinois
Mental Health
Counselors

PRESENTER

Toni R. Tollerud,

Ph.D., LCPC, NCC, NCSC, ACS

is a Presidential Teaching Professor of counseling in the Department of Counseling, Adult and Higher Education at Northern Illinois University. As an educator for over 39 years, Dr. Tollerud has had extensive experiences in supervision training including student teachers, school counselors, agency counselors, and counselors-in-training.

These experiences have been beneficial in helping to develop the supervision course at NIU, as well as doing numerous presentations around the state and at conferences on issues related to supervision. Over the past 18 years, she has consistently taught core courses, especially in supervision, practicum, internship and counseling. Participants in her classes and workshops come away enthused and informed regarding ways they can improve their own supervisory skills and relationships.

Dr. Tollerud is Past-President of the Illinois Counseling Association, North Central Association of Counselor Educators and Supervisors, and the Illinois Counselor Educators and Supervisors. She has received numerous awards for her professional work including the Illinois Mental Health Counselors Association Outstanding Service Award in 2006, and Illinois Counselor Educators Educator of the Year Award in 2003. She has published numerous articles and book chapters on counseling issues. She is a Licensed Clinical Professional Counselor, National Certified Counselor, National Certified School Counselor, approved Clinical Supervisor, and a graduate of the University of Iowa. She also holds certificates for elementary and secondary teaching and school counseling for the State of Illinois.



PACKAGE INCLUDES

- An audio reproduction of the selected workshop (*Evaluation and Assessment or Effective Strategies*)
- The handout from the workshop
- An exam to complete at the conclusion of the training program

As you are listening to the audio program and reading the handout, you should be able to answer the questions on the exam. After completing the audio program and the handouts you can complete the enclosed review test. The exam is "open-book" and can be faxed or mailed back to us. Mailing address: P.O. Box 706, DeKalb, IL 60115.

After reviewing and scoring the exam, we will mail you your CE certificate if you correctly answered 70% of the questions. Please allow 2-3 weeks for notification of your results and certificates of completion.

Evaluation & Assessment in Counseling Supervision HOME STUDY COURSE

Key Components:

- Problems in the supervisory relationship
- Models in supervision: new avenues and ideas
- Stages in supervisee development
- Evaluation & assessment techniques
- Supervisor competence & need for professional development
- Advanced ethical & legal issues of supervision

More Specific Ideas:

- Difficult supervisees; games and how to counteract them
- Help participant define own model or preferred style
- Evaluation of pre-graduates versus evaluation of professionals over time
- Boundaries and dual relationships
- Competence issues - growing as a supervisor
- Research impacting supervision
- Advanced ethical issues - legal concerns and liability

Effective Strategies in Counseling Supervision HOME STUDY COURSE

Key Components:

- Overview of supervision
- Different settings of supervision
- Effective planning
- The first session in supervision
- The process of supervision
- Selecting a preferred style
- The discrimination model
- Ethical considerations

More Specific Ideas:

- What is supervision?
- Differences in settings, roles, expectations, and evaluation for pre-graduated supervisees and beginning professionals
- Roles of effective supervisors
- Expectations of supervisor/supervisee
- Selecting a preferred style for supervision and understanding of the discrimination model as a starting point
- The supervisor as learner in the discrimination model
- Effective planning for the supervision session
- The art and importance of process in supervision
- Ethical concerns and vignettes pertinent for the beginning supervisor
- Little: Methods and Techniques, The Supervisory Relationship